

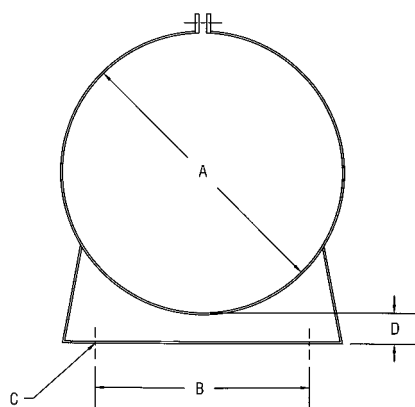
HAPCO Mounting Bands

SIZE MODEL	A	B	C	D	MATERIAL GAUGE	WIDTH	WEIGHT (Lbs.)
MB 5	5.25	3.625	0.437	1.0	10 GA	1.0	2
MB 6	6.0	3.75	0.437	1.0	10 GA	1.0	2
MB 7	7.0	4.75	0.437	1.0	10 GA	1.0	3
MB 7-8	7.5	4.75	0.437	1.0	10 GA	1.0	3
MB 8	8.0	5.75	0.437	1.0	10 GA	1.25	4
MB 9	9.0	6.75	0.437	1.0	10 GA	1.5	5
MB 10	10.0	7.75	0.437	1.0	10 GA	1.5	5
MB 11	11.0	8.75	0.437	1.0	10 GA	1.75	6
MB 12	12.0	9.75	0.437	1.0	10 GA	1.75	6
MB 14	14.0	11.75	0.437	2.0	0.1875	1.75	7
MB 16	16.0	13.75	0.625	2.0	0.1875	1.75	7
MB 17	17.0	13.75	0.625	2.0	0.1875	1.75	15
MB 18	18.0	13.75	0.625	3.0	0.25	3.0	18
MB 20	20.0	17.75	0.625	3.0	0.25	3.0	20
MB 22	22.0	17.75	0.625	3.0	0.25	3.0	21
MB 24	24.0	19.5	0.6875	3.0	0.25	3.0	24
MB 26	26.0	21.5	0.6875	3.0	0.25	3.0	26
MB 28	28.0	23.5	0.6875	3.0	0.25	3.0	32
MB 30	30.0	25.5	0.6875	3.0	0.25	3.0	55
MB 36	36.0	30.0	0.875	4.0	0.375	4.0	68
MB 38	38.0	32.0	0.875	4.0	0.375	4.0	80
MB 42	42.0	36.0	0.875	4.0	0.375	4.0	95
MB 48	48.0	42.0	1.125	5.0	0.375	6.0	110
MB 54	54.0	42.0	1.125	6.0	0.375	6.0	135
MB 60	60.0	50.0	1.25	6.0	0.375	6.0	160

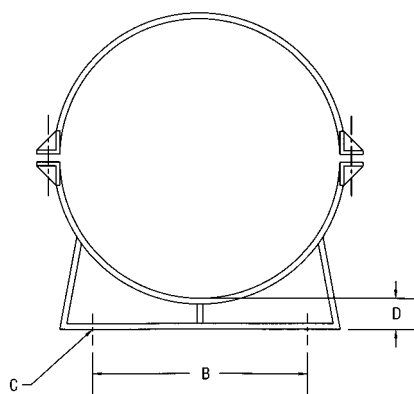
*For price information see Section 2 Page 12

*Note: Estimated weight only

17" And Below



18" And Above



Features:

- 17" and above have half clamps as shown
- All welded steel
- Optional stainless steel