

HAPCO
Insulated Exhaust Pipe
Underground Wall Thimbles

SIZE	ITEM #	A (O.D.)	B	# BOLTS	DIA. BOLTS	C (B.C.)	D (DIA.)	E
2.0"	480200	2.375 O.D.	8.5	8	.625	6.0	14.5	1.0
2.5"	480250	2.875 O.D.	9.0	8	.625	6.5	15.0	1.0
3.0"	480300	3.5 O.D.	9.5	8	.625	7.0	15.5	1.0
3.5"	480350	4.0 O.D.	10.0	8	.625	7.5	16.0	1.0
4.0"	480400	4.5 O.D.	10.5	8	.750	7.5	16.5	1.0
5.0"	480500	5.5 O.D.	11.625	8	.750	8.5	17.625	1.0
6.0"	480600	6.625 O.D.	12.75	8	.750	9.5	18.75	1.0
8.0"	480800	8.625 O.D.	15.625	8	.750	11.75	21.75	1.0
10.0"	481000	10.75 O.D.	16.75	8	.750	13.25	22.75	1.0
12.0"	481200	12.75 O.D.	18.75	12	.750	15.25	24.75	1.0
14.0"	481400	14.0	20.0	12	1.0	16.5	26.0	1.0
16.0"	481600	16.0	22.0	14	1.0	18.5	28.0	1.0
18.0"	481800	18.0	24.0	16	1.0	20.5	30.0	1.25
20.0"	482000	20.0	26.0	18	1.0	22.5	32.0	1.25
22.0"	482200	22.0	28.0	20	1.0	24.5	34.0	1.25
24.0"	482400	24.0	30.0	24	1.0	26.5	36.0	1.25
26.0"	482600	26.0	32.0	24	1.0	28.5	38.0	1.25
28.0"	482800	28.0	34.25	28	1.375	32.0	40.0	1.25
30.0"	483000	30.0	36.25	28	1.375	34.0	42.0	1.375

NOTE: Consult Factory for prices and availability

Recommended Application:

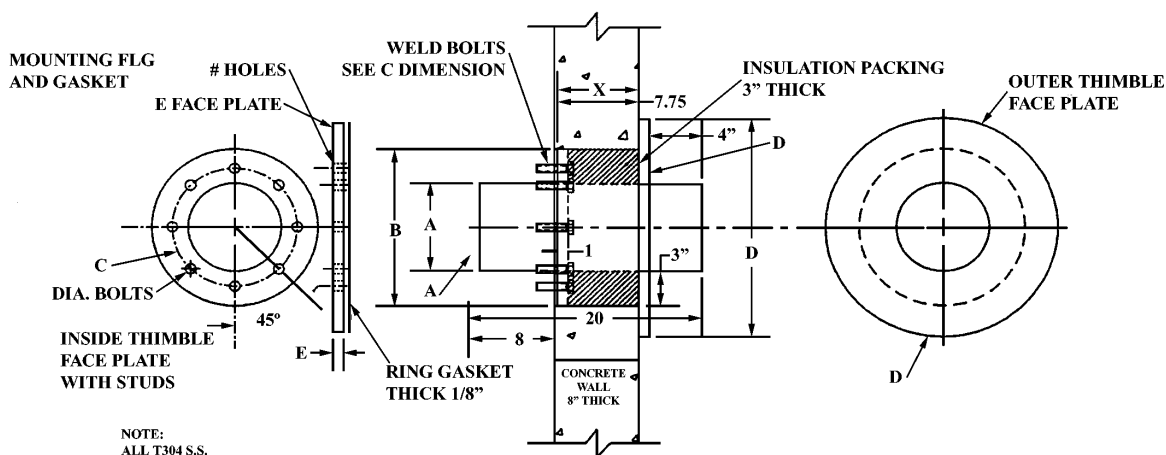
- HAPCO insulated exhaust underground wall thimbles are recommended for use with exhaust pipes that must pass through a structure

Features:

- The thimbles prevent exhaust pipe heat, sound and vibration from being transmitted to structure
- Insulated exhaust underground thimbles are constructed of type 304 stainless

Accessories:

- Gaskets
- Fasteners



NOTE: Thimble Thickness or Length (X) must be .25" less than wall thickness.
 Above diagram is for 8" thick wall. Thimble sized for sch. 40 pipe.