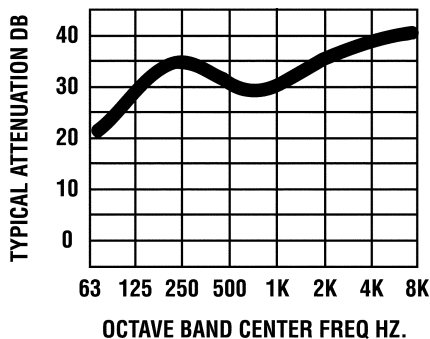


HAPCO Super Critical Grade VCS Series Dual Side Inlet

SIZE MODEL	DWG #	A	A1	B	C	D	E	F	G	H	I	M	WT (Lbs.)
1252VCS2-8X2-8X4	500A-1	2.5	4	12	52	57.125	0.875	4.25	6	4	51	±	130
1669VCS3X3X5	501A-1	3	5	16	69	74.75	1	4.75	8	4	66.5	±	265
2472VCS4X4X6	502A-1	4	6	24	72	83.5	3.75	7.75	8	4	75.5	±	478
2888VCS5X5X8	503A-1	5	8	28	88	100.75	4.375	8.375	8	4	92.75	±	684
30102VCS6X6X10	504A-1	6	10	30	102	115	4.5	8.5	10	6	105	±	1045
36136VCS8X8X12	505A-1	8	12	36	136	150.5	5.25	9.25	11.75	6	138.75	±	1682
36142VCS8X8X14	506A-1	8	14	36	142	157.25	5.25	10	12.5	6	144.75	±	1767
42150VCS10X10X16	507A-1	10	16	42	150	167.25	6.625	10.62	15.625	8	151.625	±	2150
48162VCS12X12X18	508A-1	12	18	48	162	183.5	8.25	13.25	15	8	168.5	±	2596
54184VCS12X12X20	509A-1	12	20	54	184	207.25	10	13.25	18	8	187.5	±	3233
72196VCS18X18X30	510A-1	18	30	72	196	224.12	12.12	16	24	8	198.5	±	5497
84252VCS20X20X36	511A-1	20	36	84	252	283.75	13.75	18	26	8	256.5	±	7879

*For price information see Section 2 Page 8

*Note Estimated weight only

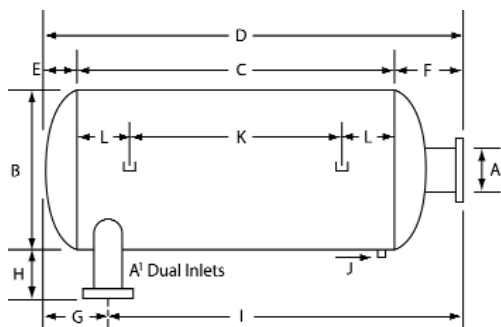


Recommended Applications:

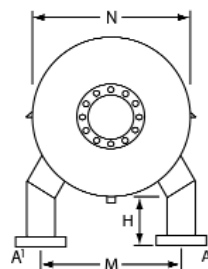
- Hospitals
- Waste Water Plants
- High Tech Industries
- Where the surrounding noise level is low

Features:

- Attenuation 30 to 40 dBA
- The rotation of the exhaust gas allows for a clean transition through the silencer with limited pressure loss
- This type of design allows for a change in the noise frequency to a higher band, the results are a much simpler sound to attenuate
- This is accomplished by the annulling of the noise by a series of chambers with acoustical packing
- The multi-chambered design also allows us to attenuate the lower frequency bands present in the exhaust
- A side branch designed chamber provides the last step to de-energize the noise. The external shell temperature is greatly reduced by the chambers with internal packing
- Hanger brackets and condensation drain included
- Exhaust gases flow through the silencer in a vortex motion and noise reduction is accomplished by a combination of absorption & annulling of noise waves resulting in reduced silencer diameters
- Sound data is based on **Flow Velocity Not To Exceed 9000 FPM**, see engineering section chart
- Standard heavy duty all welded steel construction with high temperature primer and black paint
- Optional stainless steel construction or zinc based high heat and high corrosion resistant paint



**NOTE: DUAL END INLETS
ALSO AVAILABLE**



NOTE:
M (±) DETERMINED
BY ENGINE EXHAUST
PIPING

Accessories:

- Flexible Connectors
- Mounting Bands
- Hanger Brackets
- Wye Connectors
- Wall and Roof Thimbles
- High Temp Exhaust Blankets
- Support Legs for Vertical Mounting
- Rain Caps
- Exhaust Pipe Spools
- Backfire Relief Vents
- Flanges of all types
- Clean Outs or Inspection Ports
- Gaskets - Hi Temp
- Nuts & Bolts