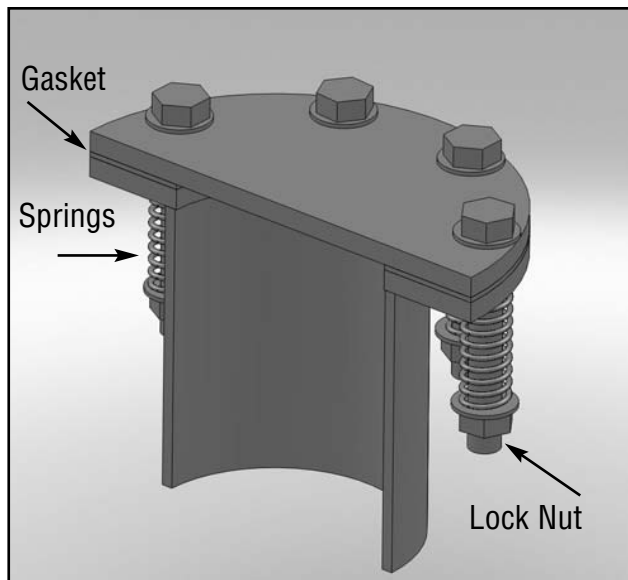


HAPCO
Backfire Relief Cover

SILENCER DIAMETER	ORIFICE SIZE	PART NUMBER - Cover A	PART NUMBER - Cover B
8 to 10	EQUAL TO INLET SIZE	HEX3	HEX-V 3
11 to 14	EQUAL TO INLET SIZE	HEX4	HEX-V 4
16 to 18	EQUAL TO INLET SIZE	HEX6	HEX-V 6
20 to 24	EQUAL TO INLET SIZE	HEX8	HEX-V 8
26 to 36	EQUAL TO INLET SIZE	HEX12	HEX-V 12
42 to 48	EQUAL TO INLET SIZE	HEX16	HEX-V 16
54 to 60	EQUAL TO INLET SIZE	HEX20	HEX-V 20
66 to 72	EQUAL TO INLET SIZE	HEX24	HEX-V 24

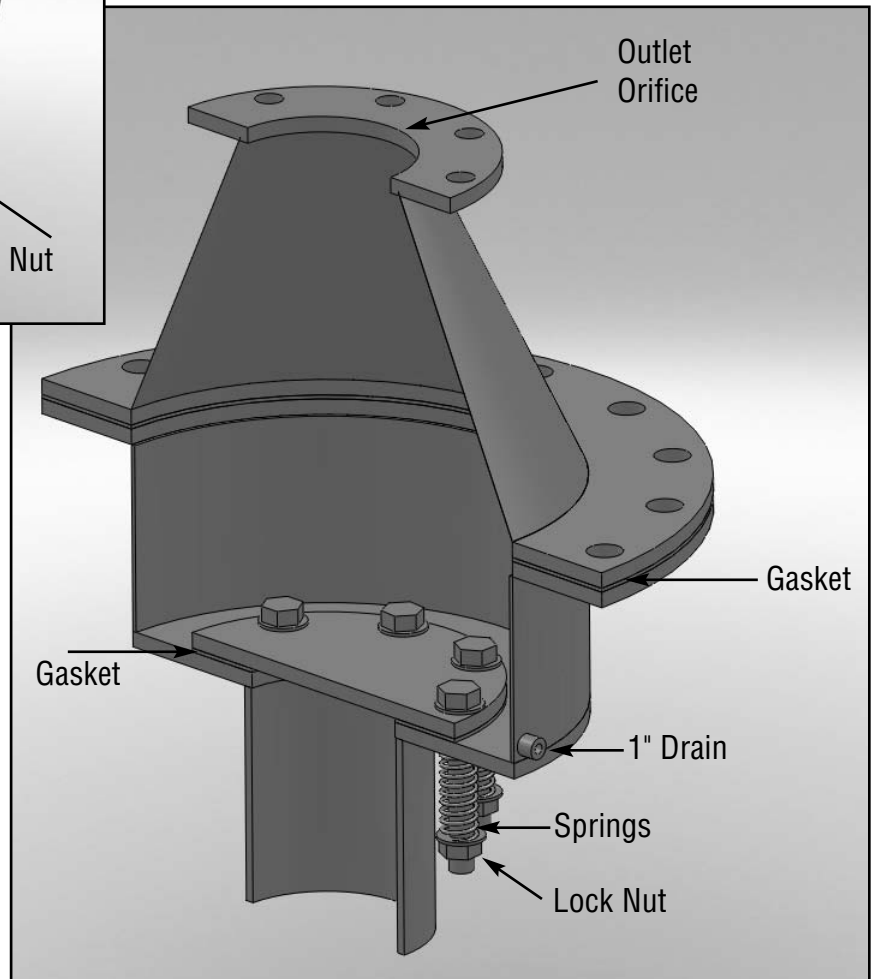
**For price information see Section 2 Page 11*



Cover A:
 Designed to vent
 at the silencer
 or engine room.

Features:

- Designed for pressure relief at 5 psi
- Provides for protection against damage to silencer in case of backfire or explosion
- **NOTE:** Must be installed in the first silencer chamber to provide maximum protection



Cover B:
 Designed for
 venting through
 a roof.

Insulated Exhaust Pipe Wall/Roof Thimbles - Zero Clearance
WT = Wall Thimble • RT = Roof Thimble • (WT or RT to precede Item#)

NUMBER	ITEM #	A (Pipe)	B	C	D	Est. Wt. (lbs)
1.0"	470100	1.375 ID	5.375	13	10.25	31
1.25"	470125	1.75 ID	5.75	13	10.25	32
1.5"	470150	2.0 ID	6.0	13	10.25	33
2.0"	470200	2.5 ID	6.5	14	11.5	36
2.5"	470250	3.0 ID	7.0	14	11.5	38
3.0"	470300	3.625 ID	7.625	15	12.0	44
3.5"	470350	4.125 ID	8.125	15	12.0	45
4.0"	470400	4.625 ID	8.625	20	14.25	70
5.0"	470500	5.625 ID	9.625	20	14.25	73
6.0"	470600	6.75 ID	10.75	22	16.25	88
8.0"	470800	8.875 ID	12.875	24	17.25	92
10.0"	471000	10.875 ID	14.875	28	20.5	114
12.0"	471200	12.875 ID	16.875	30	23.5	130
14.0"	471400	14.187 ID	18.187	30	23.5	135
16.0"	471600	16.187 ID	20.187	32	26.5	150
18.0"	471800	18.187 ID	22.187	32	26.5	155
20.0"	472000	20.187 ID	24.187	34	28.5	165
22.0"	472200	22.187 ID	26.187	36	30.5	175
24.0"	472400	24.187 ID	28.187	40	32.5	195
26.0"	472600	26.187 ID	30.187	42	34.5	205
28.0"	472800	28.187 ID	32.187	44	36.5	215
30.0"	473000	30.187 ID	34.187	46	38.5	230

*For price information see Section 2 Page 11

Recommended Application:

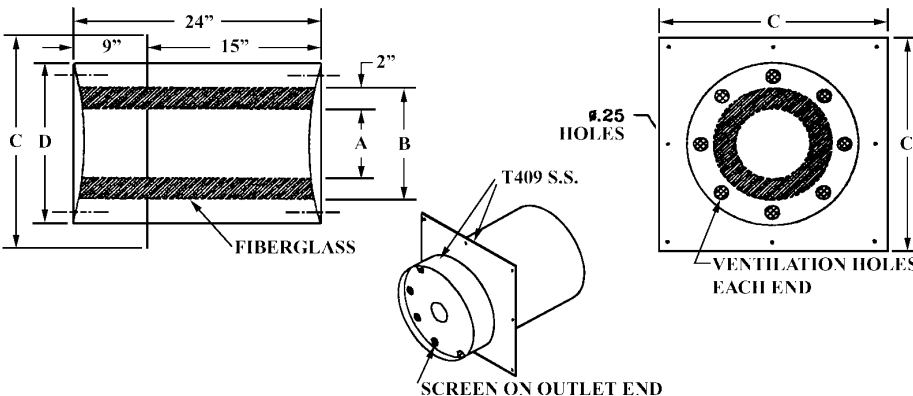
- HAPCO Insulated exhaust roof and wall thimbles are recommended for use with exhaust pipes that must pass through a structure. The thimbles prevent exhaust pipe heat from being transmitted to the combustible material

Features:

- Insulated exhaust roof and wall thimbles are triple wall **ALL STAINLESS STEEL TYPE 304 CONSTRUCTION**
- Ventilation holes are located on each end to provide air cooling
- Screening is used on outlet end to prevent birds, rodents etc. from entering
- 24" is standard length, for longer requirements multiply list price X 4% for each additional inch
- Roofs with:
 Pitch 1-12 to 3-12 add \$60.00
 Pitch 4-12 and 5-12 add \$70.00
 Pitch 6-12 and up add \$86.00

Accessories:

- Gaskets
- Fasteners



HAPCO

Insulated Exhaust Tube Wall/Roof Thimbles - Zero Clearance

WT = Wall Thimble • RT = Roof Thimble • (WT or RT to precede Item#)

NUMBER	ITEM #	A (Tube)	B	C	D	Est. Wt. (lbs)
1.0"	570100	1.125	5.375	13	10.25	31
1.25"	570125	1.375	5.75	13	10.25	32
1.5"	570150	1.625	6.0	13	10.25	33
2.0"	570200	2.125	6.5	14	11.5	36
2.5"	570250	2.625	7.0	14	11.5	38
3.0"	570300	3.125	7.625	15	12.0	44
3.5"	570350	3.75	8.125	15	12.0	45
4.0"	570400	4.25	8.625	20	14.25	70
5.0"	570500	5.25	9.625	20	14.25	73
6.0"	570600	6.25	10.75	22	16.25	88
8.0"	570800	8.25	12.875	24	17.25	92
10.0"	571000	10.25	14.875	28	20.5	114
12.0"	571200	12.25	16.875	30	23.5	130
14.0"	571400	14.187	18.187	30	23.5	135
16.0"	571600	16.187	20.187	32	26.5	150
18.0"	571800	18.187	22.187	32	26.5	155
20.0"	572000	20.187	24.187	34	28.5	165
22.0"	572200	22.187	26.187	36	30.5	175
24.0"	572400	24.187	28.187	40	32.5	195
26.0"	572600	26.187	30.187	42	34.5	205
28.0"	572800	28.187	32.187	44	36.5	215
30.0"	573000	30.187	34.187	46	38.5	230

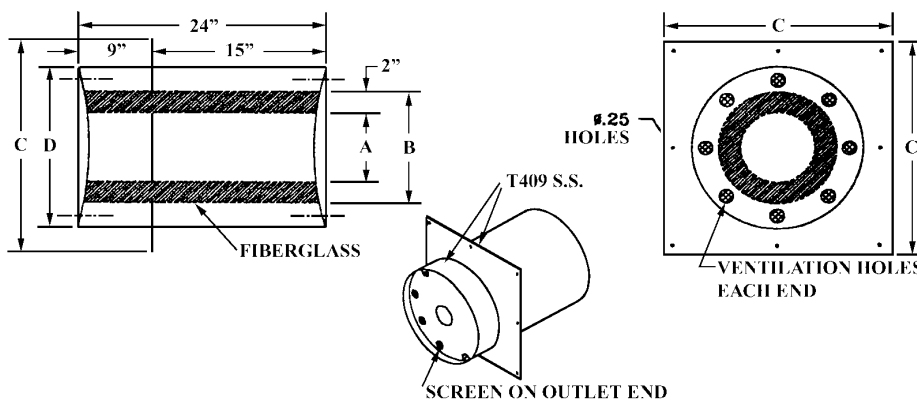
**For price information see Section 2 Page 11*

Recommended Application:

- HAPCO insulated exhaust roof and wall thimbles are recommended for use with exhaust pipes that must pass through a structure.

Features:

- The thimbles prevent exhaust pipe heat from being transmitted to the combustible material
- Insulated exhaust roof and wall thimbles are triple wall **ALL STAINLESS STEEL TYPE 304 CONSTRUCTION**
- Ventilation holes are located on each end to provide air cooling
- Screening is used on outlet end to prevent birds, rodents etc. from entering
- 24" is standard length, for longer requirements multiply list price X 4% for each additional inch
- Roofs with:
 - Pitch 1-12 to 3-12 add \$60.00
 - Pitch 4-12 and 5-12 add \$70.00
 - Pitch 6-12 and up add \$86.00



Accessories:

- Gaskets
- Fasteners

HAPCO
Insulated Exhaust Pipe
Underground Wall Thimbles

SIZE	ITEM #	A (O.D.)	B	# BOLTS	DIA. BOLTS	C (B.C.)	D (DIA.)	E
2.0"	480200	2.375 O.D.	8.5	8	.625	6.0	14.5	1.0
2.5"	480250	2.875 O.D.	9.0	8	.625	6.5	15.0	1.0
3.0"	480300	3.5 O.D.	9.5	8	.625	7.0	15.5	1.0
3.5"	480350	4.0 O.D.	10.0	8	.625	7.5	16.0	1.0
4.0"	480400	4.5 O.D.	10.5	8	.750	7.5	16.5	1.0
5.0"	480500	5.5 O.D.	11.625	8	.750	8.5	17.625	1.0
6.0"	480600	6.625 O.D.	12.75	8	.750	9.5	18.75	1.0
8.0"	480800	8.625 O.D.	15.625	8	.750	11.75	21.75	1.0
10.0"	481000	10.75 O.D.	16.75	8	.750	13.25	22.75	1.0
12.0"	481200	12.75 O.D.	18.75	12	.750	15.25	24.75	1.0
14.0"	481400	14.0	20.0	12	1.0	16.5	26.0	1.0
16.0"	481600	16.0	22.0	14	1.0	18.5	28.0	1.0
18.0"	481800	18.0	24.0	16	1.0	20.5	30.0	1.25
20.0"	482000	20.0	26.0	18	1.0	22.5	32.0	1.25
22.0"	482200	22.0	28.0	20	1.0	24.5	34.0	1.25
24.0"	482400	24.0	30.0	24	1.0	26.5	36.0	1.25
26.0"	482600	26.0	32.0	24	1.0	28.5	38.0	1.25
28.0"	482800	28.0	34.25	28	1.375	32.0	40.0	1.25
30.0"	483000	30.0	36.25	28	1.375	34.0	42.0	1.375

NOTE: Consult Factory for prices and availability

Recommended Application:

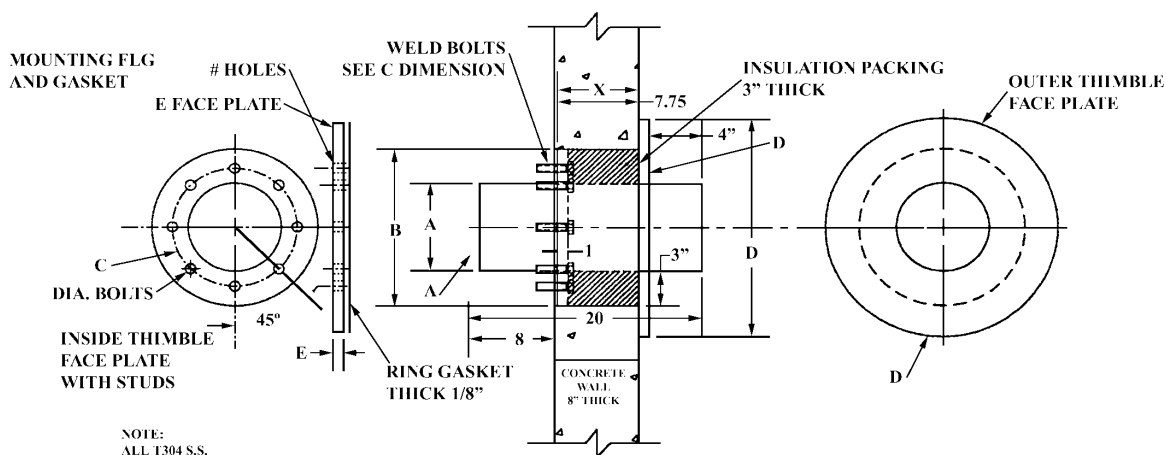
- HAPCO insulated exhaust underground wall thimbles are recommended for use with exhaust pipes that must pass through a structure

Features:

- The thimbles prevent exhaust pipe heat, sound and vibration from being transmitted to structure
- Insulated exhaust underground thimbles are constructed of type 304 stainless

Accessories:

- Gaskets
- Fasteners



NOTE: Thimble Thickness or Length (X) must be .25" less than wall thickness.
 Above diagram is for 8" thick wall. Thimble sized for sch. 40 pipe.

HAPCO
Insulated and Vented Exhaust Pipe
Wall and Roof Thimbles

Recommended Application:

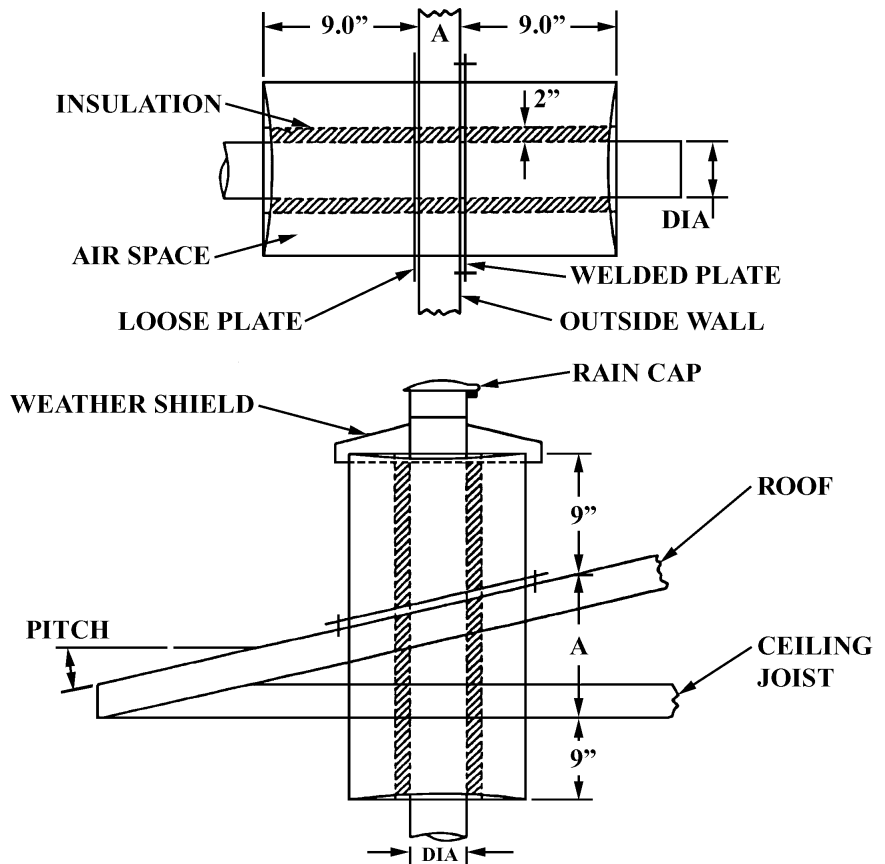
- Recommended for use with exhaust pipes that must pass through a wall or roof structure.

Features:

- The thimble prevents exhaust pipe heat from being transmitted to the combustible material
- Insulated exhaust wall and roof thimbles are **triple wall constructed of type 304 stainless steel**
- Ventilation holes are located on each end to provide air cooling
- Screening is used on the outlet end to prevent birds, rodents, etc from entering the thimble
- 24" is standard but longer lengths are available
- Thimbles are internally insulated with 2" of fiberglass insulation
- Optional weather shield and rain cap available and recommended

Information needed when ordering:

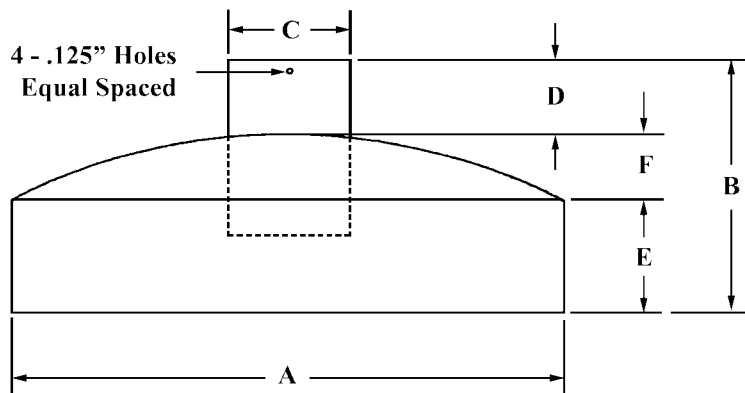
- Wall or roof thickness
- Type of construction (wood, masonry, steel, etc.)
- Pitch of roof for roof thimbles
- Diameter of the exhaust pipe
- NOTE: "A" dimension must be added to find the overall length. 9" of extension is required to meet code. Add "A" + 18" for the overall length needed



HAPCO
Exhaust Weather Shields

ITEM #	SIZE	A	B	C	Tube	D	E	F
490100	1.0	12	5.375	1.375	1.125	2	2.5	0.875
490125	1.25	12	5.375	1.75	1.375	2	2.5	0.875
490150	1.5	12	5.375	2.0	1.625	2	2.5	0.875
490200	2.0	14	5.375	2.5	2.125	2	2.5	0.875
490250	2.5	14	5.375	3.0	2.625	2	2.5	0.875
490300	3.0	14	5.375	3.625	3.125	2	2.5	0.875
490350	3.5	14	5.875	4.125	3.75	2	3.0	0.875
490400	4.0	16	5.875	4.625	4.25	2	3.0	0.875
490500	5.0	16	5.875	5.625	5.25	2	3.0	0.875
490600	6.0	18	6.25	6.75	6.25	2	3.0	1.25
490800	8.0	20	6.25	8.875	8.25	2	3.0	1.25
491000	10.0	22	7.75	10.875	10.25	2	4.0	1.75
491200	12.0	26	8.0	12.875	12.25	2	4.0	2.0
491400	14.0	26	8.0	14.1875	14.1875	2	4.0	2.0
491600	16.0	28	10.0	16.1875	16.1875	2	6.0	2.0
491800	18.0	28	10.0	18.1875	18.1875	2	6.0	2.0
492000	20.0	30	12.5	20.1875	20.1875	2	6.0	4.5
492200	22.0	36	13.25	22.1875	22.1875	2	6.0	5.25
492400	24.0	38	15.0	24.1875	24.1875	3	6.0	6.0
492600	26.0	38	15.0	26.1875	26.1875	3	6.0	6.0
492800	28.0	40	15.625	28.1875	28.1875	3	6.0	6.625
493000	30.0	42	15.625	30.1875	30.1875	3	6.0	6.625

*For price information see Section 2 Page 11



Features:

- HAPCO weather shields are used in conjunction with the insulated exhaust thimbles to prevent water from entering the thimble
- All welded steel painted black or optional stainless steel
- Specify pipe or tube size (C)
- Size listed above are for schedule 40 pipe

Accessories:

- Gaskets
- Fasteners

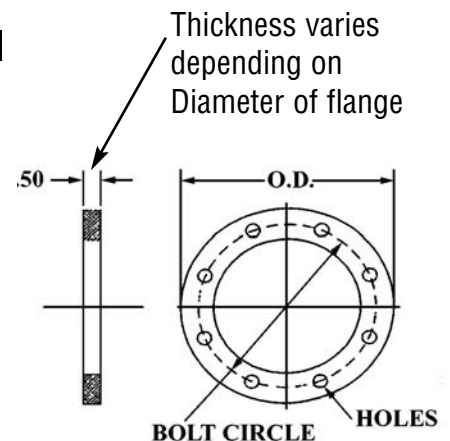
HAPCO
Flanges and Gaskets

SIZE	FLANGE PART #	FLANGE KIT PART #	GASKET PART #	O.D.	B.C.	# BOLT HOLES	HOLE DIA.	NUT & BOLT FASTENER PART #	SIZE
1.25	500125	500125A	500125B	4.625	3.5	4	0.625	50011	.5"
1.5	500150	500150A	500150B	5.0	3.874	4	0.625	50011	.5"
2.0	500200	500200A	500200B	6.0	4.75	4	0.75	50012	.625"
2.5	500250	500250A	500250B	7.0	5.5	4	0.75	50012	.625"
3.0	500300	500300A	500300B	7.5	6.0	4	0.75	50012	.625"
3.5	500350	500350A	500350B	8.5	7.0	8	0.75	50012	.625"
4.0	500400	500400A	500400B	9.0	7.5	8	0.75	50012	.625"
5.0	500500	500500A	500500B	10.0	8.5	8	0.875	50013	.75"
6.0	500600	500600A	500600B	11.0	9.5	8	0.875	50013	.75"
8.0	500800	500800A	500800B	13.5	11.75	8	0.875	50013	.75"
10.0	501000	501000A	501000B	16.0	14.25	12	1.0	50014	.875"
12.0	501200	501200A	501200B	19.0	17.0	12	1.0	50014	.875"
14.0	501400	501400A	501400B	21.0	18.75	12	1.125	50015	1.0"
16.0	501600	501600A	501600B	23.5	21.25	16	1.125	50015	1.0"
18.0	501800	501800A	501800B	25.0	22.75	16	1.25	50016	1.125"
20.0	502000	502000A	502000B	27.5	25.0	20	1.25	50016	1.125"
22.0	502200	502200A	502200B	29.5	27.25	20	1.375	50017	1.25"
24.0	502400	502400A	502400B	32.0	29.5	20	1.375	50017	1.25"
26.0	502600	502600A	502600B	34.25	31.75	24	1.375	50017	1.25"
28.0	502800	502800A	502800B	36.5	34.0	28	1.375	50017	1.25"
30.0	503000	503000A	503000B	38.75	36.0	28	1.375	50017	1.25"

*For price information see Section 2 Page 16 & 17

Features:

- Material specification, carbon steel, .50 thick machined surfaces, 125# flanges
- Optional 304 or 316L stainless
- Flanges are available in O.D. Tube and Sch Pipe, companion flanges
- Flange Kits consist of:**
 - 2 Flanges
 - 2 Gaskets
 - Nuts & Bolts for 2 flanges
 - Half Kits are also available, consult factory for prices



ITEM #	SPECIAL FLGS	ITEM #	GASKETS	ITEM #	GASKETS
500600CAT	CAT 6	500600G	CAT 6	50120MG	12AC METAL
500800CAT	CAT 8	500800G	CAT 8		
501000CAT	CAT 10	501000G	CAT 10		
501200CAT	CAT 12	501200G	CAT 12		
501400CAT	CAT 14	501400G	CAT 14		
50588CUM	5.88 CUM	50588G	5.88CUM		
50078CUM	7-8 CUM	50078G	7-8CUM		
501200AC	12AC12	501200G	12AC12		
500800DD	DD 8	500800DDG	DD 8		
501000DD	DD 10	501000DDG	DD 10		

*For price information see Section 2 Page 17

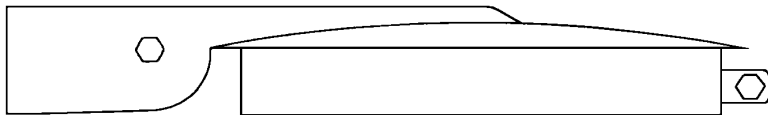
Weather Stops

Rev. 03/11

**HAPCO
Weather Stops
Heavy Duty Rain Cap**

ITEM NUMBER	PART NUMBER	STACK SIZE	WEIGHT (Lbs.)
51003-H	HD 3	3 O.D.	3
51038-H	HD 3-8	3 PIPE	3
51004-H	HD 4	4 O.D.	3
51048-H	HD 4-8	4 PIPE	4
51005-H	HD 5	5 O.D.	4
51058-H	HD 5-8	5 PIPE	4
51006-H	HD 6	6 O.D.	4
51610-H	HD 6-10	6 PIPE	4
51008-H	HD 8	8 O.D.	6
51810-H	HD 8-10	8 PIPE	6
51010-H	HD 10	10 O.D.	10
51012-H	HD 10-12	10 PIPE	10
51112-H	HD 12	12 O.D.	12
51212-H	HD12-12	12 PIPE	15
51014-H	HD 14	14 PIPE	15
51016-H	HD 16	16 PIPE	21
51018-H	HD 18	18 PIPE	30
51020-H	HD 20	20 PIPE	
51022-H	HD 22	22 PIPE	
51024-H	HD 24	24 PIPE	

**For price information see Section 2 Page 12*



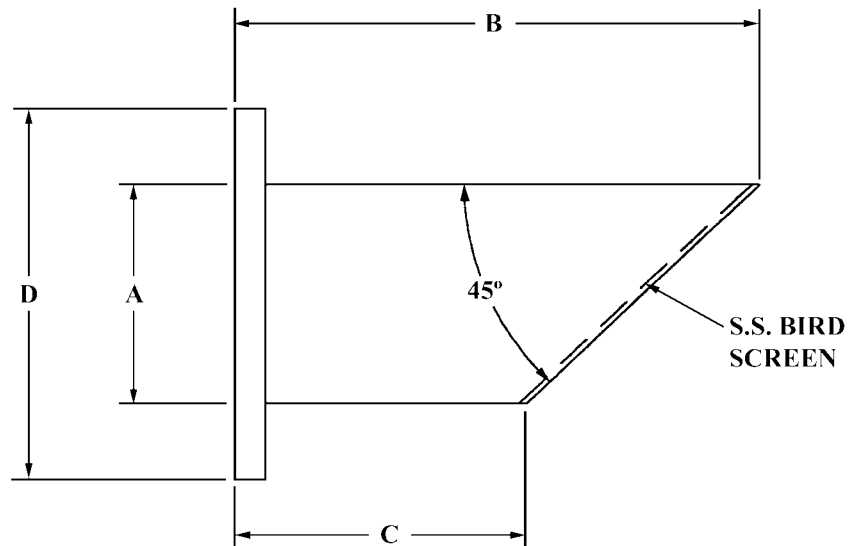
Features:

- Expands with pipe
- Hi Temp Paint
- Optional stainless steel
- Easy to install
- Welded heavy duty construction
- **NOTE:** Always specify outside diameter of stack
- Larger sizes available

HAPCO
Flanged Mitered Exhaust Pipe Extension
With Bird Screen

PART NUMBER	A	B	C	D
51003	3.0	8.0	5.0	7.5
51038	3.5	8.0	4.5	8.5
51040	4.0	10.0	6.0	9.0
51050	5.0	12.0	7.0	10.0
51060	6.0	16.0	10.0	11.0
51080	8.0	18.0	10.0	13.5
51100	10.0	18.0	8.0	16.0
51120	12.0	20.0	8.0	19.0
51140	14.0	24.0	10.0	21.0
51160	16.0	24.0	8.0	23.5
51180	18.0	28.0	10.0	25.0
51200	20.0	30.0	10.0	27.5
51220	22.0	32.0	10.0	29.5
51240	24.0	36.0	12.0	32.0

**For price information see Section 2 Page 15*



Weather Stops

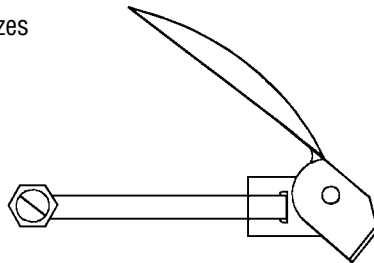
Rev. 03/11

HAPCO
Weather Stops - Remembers to Protect
Light Duty

PART NUMBER	STACK SIZE	LIST PRICE \$
#32	Up to 2-1/2"	\$ 14.00
#44	2-9/16" to 3-1/8"	\$ 16.00
#64	3-3/16" to 4-3/4"	\$ 21.00
#80	4-7/8" to 5-1/2"	\$ 30.00
#96	5-5/8" to 6-1/2"	\$ 40.00
#104	6-5/8" to 7"	\$ 43.00
#120	7-1/8" to 7-7/8"	\$ 50.00
#132	8" to 8-3/4"	\$ 58.00

**For price information see Section 2 Page 12*

- Stainless steel clamp
- Aluminized steel cap
- Brass bushing hinge
- Adjustable clamp
- Lightweight
- Adjustable sizes



Features:

- HAPCO lightweight weather stops provide protection for open exhaust stacks by preventing rain, snow, sleet, dust and insects from getting into the engine
- Weather stops prevent flooded pistons, cracked cylinder heads and rusted valves
- Simple installation requires only one screw to be tightened
- Stainless steel attachment band quickly adjusts to all pipe sizes within each size range
- HAPCO weather stops are available for all sizes and make of equipment

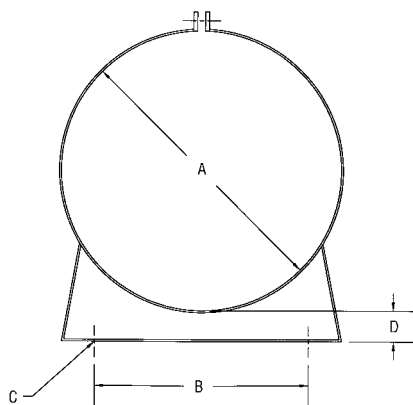
HAPCO Mounting Bands

SIZE MODEL	A	B	C	D	MATERIAL GAUGE	WIDTH	WEIGHT (Lbs.)
MB 5	5.25	3.625	0.437	1.0	10 GA	1.0	2
MB 6	6.0	3.75	0.437	1.0	10 GA	1.0	2
MB 7	7.0	4.75	0.437	1.0	10 GA	1.0	3
MB 7-8	7.5	4.75	0.437	1.0	10 GA	1.0	3
MB 8	8.0	5.75	0.437	1.0	10 GA	1.25	4
MB 9	9.0	6.75	0.437	1.0	10 GA	1.5	5
MB 10	10.0	7.75	0.437	1.0	10 GA	1.5	5
MB 11	11.0	8.75	0.437	1.0	10 GA	1.75	6
MB 12	12.0	9.75	0.437	1.0	10 GA	1.75	6
MB 14	14.0	11.75	0.437	2.0	0.1875	1.75	7
MB 16	16.0	13.75	0.625	2.0	0.1875	1.75	7
MB 17	17.0	13.75	0.625	2.0	0.1875	1.75	15
MB 18	18.0	13.75	0.625	3.0	0.25	3.0	18
MB 20	20.0	17.75	0.625	3.0	0.25	3.0	20
MB 22	22.0	17.75	0.625	3.0	0.25	3.0	21
MB 24	24.0	19.5	0.6875	3.0	0.25	3.0	24
MB 26	26.0	21.5	0.6875	3.0	0.25	3.0	26
MB 28	28.0	23.5	0.6875	3.0	0.25	3.0	32
MB 30	30.0	25.5	0.6875	3.0	0.25	3.0	55
MB 36	36.0	30.0	0.875	4.0	0.375	4.0	68
MB 38	38.0	32.0	0.875	4.0	0.375	4.0	80
MB 42	42.0	36.0	0.875	4.0	0.375	4.0	95
MB 48	48.0	42.0	1.125	5.0	0.375	6.0	110
MB 54	54.0	42.0	1.125	6.0	0.375	6.0	135
MB 60	60.0	50.0	1.25	6.0	0.375	6.0	160

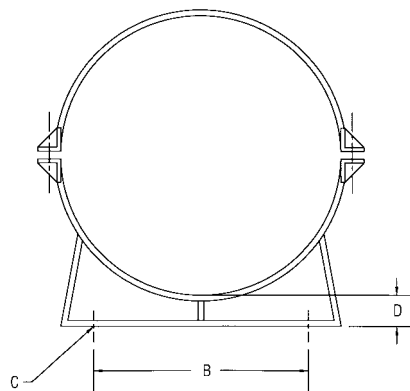
*For price information see Section 2 Page 12

*Note: Estimated weight only

17" And Below



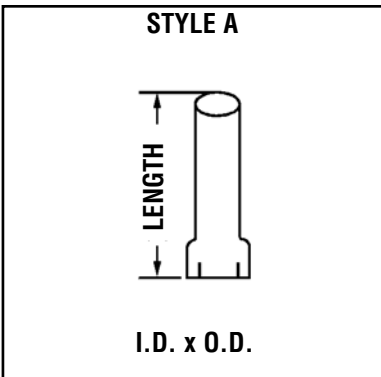
18" And Above



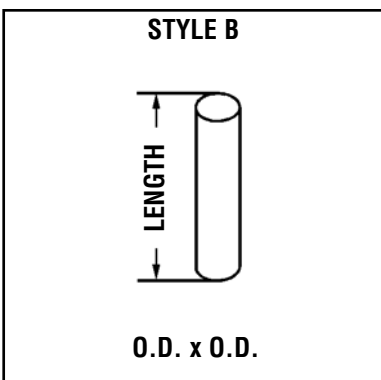
Features:

- 17" and above have half clamps as shown
- All welded steel
- Optional stainless steel

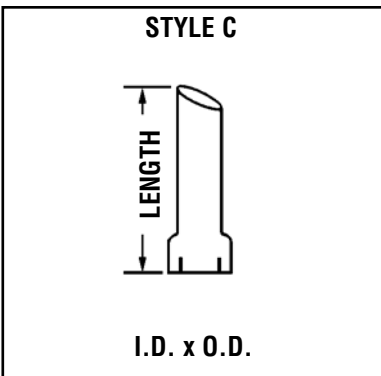
HAPCO
Exhaust Pipe Extension Stacks
ALL PRICES ARE LIST



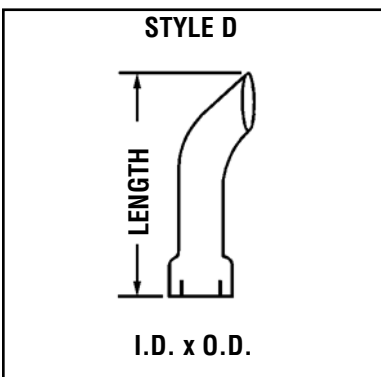
ITEM#	SIZE	LENGTH				
		12"	24"	36"	48"	60"
540020A	2.0"	\$ 18.00	\$ 20.00	\$ 22.00	\$ 26.00	\$ 32.00
540028A	2.5"	\$ 20.00	\$ 23.00	\$ 26.00	\$ 33.00	\$ 38.00
540030A	3.0"	\$ 24.00	\$ 28.00	\$ 32.00	\$ 38.00	\$ 42.00
540038A	3.5"	\$ 26.00	\$ 31.00	\$ 36.00	\$ 41.00	\$ 48.00
540040A	4.0"	\$ 28.00	\$ 34.00	\$ 40.00	\$ 46.00	\$ 52.00
540050A	5.0"	\$ 30.00	\$ 42.00	\$ 52.00	\$ 64.00	\$ 72.00
540060A	6.0"	\$ 43.00	\$ 54.00	\$ 66.00	\$ 78.00	\$ 90.00
540080A	8.0"	\$ 50.00	\$ 65.00	\$ 80.00	\$ 95.00	\$110.00
540100A	10.0"	\$ 66.00	\$ 90.00	\$115.00	\$140.00	\$165.00
540120A	12.0"	\$ 80.00	\$110.00	\$140.00	\$180.00	\$210.00



ITEM#	SIZE	LENGTH				
		12"	24"	36"	48"	60"
540020B	2.0"	\$ 12.00	\$ 16.00	\$ 20.00	\$ 24.00	\$ 28.00
540028B	2.5"	\$ 14.00	\$ 19.00	\$ 24.00	\$ 31.00	\$ 36.00
540030B	3.0"	\$ 16.00	\$ 24.00	\$ 30.00	\$ 36.00	\$ 42.00
540038B	3.5"	\$ 18.00	\$ 25.00	\$ 32.00	\$ 39.00	\$ 46.00
540040B	4.0"	\$ 20.00	\$ 28.00	\$ 36.00	\$ 44.00	\$ 54.00
540050B	5.0"	\$ 28.00	\$ 38.00	\$ 48.00	\$ 58.00	\$ 68.00
540060B	6.0"	\$ 36.00	\$ 48.00	\$ 60.00	\$ 72.00	\$ 84.00
540080B	8.0"	\$ 38.00	\$ 52.00	\$ 66.00	\$ 80.00	\$ 94.00
540100B	10.0"	\$ 55.00	\$ 80.00	\$105.00	\$130.00	\$155.00
540120B	12.0"	\$ 60.00	\$ 95.00	\$130.00	\$135.00	\$170.00



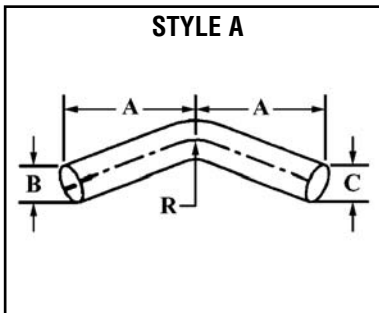
ITEM#	SIZE	LENGTH				
		12"	24"	36"	48"	60"
540020C	2.0"	\$ 33.00	\$ 37.00	\$ 41.00	\$ 45.00	\$ 49.00
540028C	2.5"	\$ 35.00	\$ 40.00	\$ 45.00	\$ 50.00	\$ 55.00
540030C	3.0"	\$ 39.00	\$ 49.00	\$ 59.00	\$ 69.00	\$ 79.00
540038C	3.5"	\$ 41.00	\$ 52.00	\$ 63.00	\$ 74.00	\$ 85.00
540040C	4.0"	\$ 43.00	\$ 51.00	\$ 59.00	\$ 67.00	\$ 75.00
540050C	5.0"	\$ 45.00	\$ 55.00	\$ 65.00	\$ 75.00	\$ 85.00
540060C	6.0"	\$ 61.00	\$ 73.00	\$ 85.00	\$ 97.00	\$109.00
540080C	8.0"	\$ 70.00	\$ 84.00	\$ 98.00	\$112.00	\$126.00
540100C	10.0"	\$ 91.00	\$116.00	\$141.00	\$166.00	\$191.00
540120C	12.0"	\$100.00	\$135.00	\$170.00	\$205.00	\$240.00



ITEM#	SIZE	LENGTH				
		12"	24"	36"	48"	60"
540020D	2.0"	\$ 44.00	\$ 46.00	\$ 48.00	\$ 50.00	\$ 52.00
540028D	2.5"	\$ 46.00	\$ 48.00	\$ 53.00	\$ 58.00	\$ 63.00
540030D	3.0"	\$ 49.00	\$ 59.00	\$ 69.00	\$ 79.00	\$ 89.00
540040D	4.0"	\$ 54.00	\$ 62.00	\$ 70.00	\$ 78.00	\$ 86.00
540050D	5.0"	\$ 65.00	\$ 70.00	\$ 75.00	\$ 80.00	\$ 90.00
540060D	6.0"	\$ 95.00	\$107.00	\$119.00	\$131.00	\$143.00

To order use Item # plus length

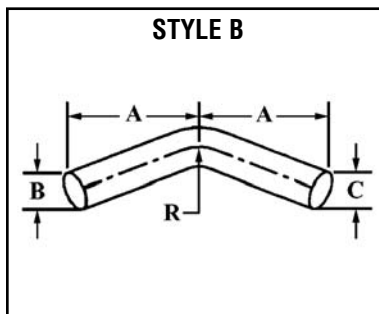
HAPCO Exhaust Elbows



45° I.D. X O.D. STYLE A

PART NUMBER	A	B (I.D.)	C (O.D.)	R
EE45-3	6	3	3	6
EE45-3-8	6	3.5	3.5	7
EE45-4	6	4	4	8
EE45-5	6.3	5	5	10
EE45-6	10	6	6	12

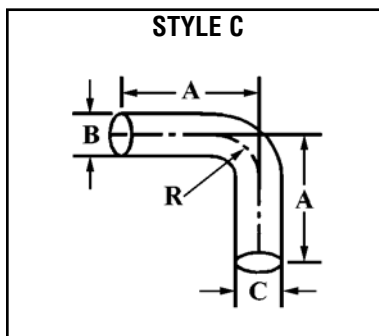
**For price information see Section 2 Page 13*



45° O.D. X O.D. STYLE B

PART NUMBER	A	B	C	R
EP45-3	6	3	3	6
EP45-3-8	6	3.5	3.5	7
EP45-4	6	4	4	8
EP45-5	6.3	5	5	10
EP45-6	10	6	6	12

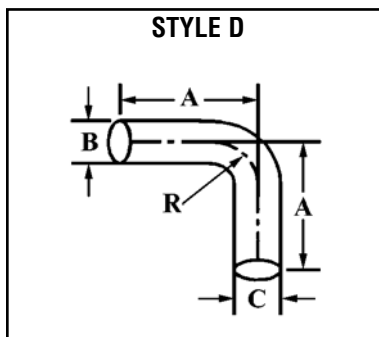
**For price information see Section 2 Page 13*



90° I.D. X O.D. STYLE C

PART NUMBER	A	B (I.D.)	C (O.D.)	R
EE90-2	4	2	2	2
EE90-2-8	5	2.5	2.5	2.5
EE90-3	5	3	3	3
EE90-3-8	5.5	3.5	3.5	3.5
EE90-4	6	4	4	4
EE90-5	7.5	5	5	5
EE90-6	10	6	6	6
EE90-8	15	8	8	8
EE90-10	19	10	10	10
EEO90-12	24	12	12	12

**For price information see Section 2 Page 13*



90° O.D. X O.D. STYLE D

PART NUMBER	A	B (I.D.)	C (O.D.)	R
EP90-2	4	2	2	2
EP90-2-8	5	2.5	2.5	2.5
EP90-3	5	3	3	3
EP90-3-8	5.5	3.5	3.5	3.5
EP90-4	6	4	4	4
EP90-5	7.5	5	5	5
EP90-6	10	6	6	6
EP90-8	9.875	8	8	8
EP90-10	11	10	10	10
EP90-12	18	12	12	12

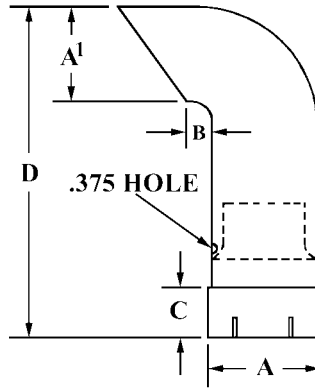
**For price information see Section 2 Page 13*

HAPCO
Exhaust Stack Rain Guard

PART NUMBER	SIZE	A	A1	B	C	D
ESRL-3	3	3.0 I.D.	3.0 D.	1.5	3.5	28
ESRL-3-8	3.5	3.5 I.D.	3.5 D.	1.75	3.5	28
ESRL-4	4	4.0 I.D.	4.0 D.	2.0	3.5	28
ESRL-5	5	5.0 I.D.	5.0 D.	2.5	3.5	28
ESRL-6	6	6.0 I.D.	6.0 D.	3.0	3.5	38
ESRL-8	8	8.0 I.D.	8.0 D.	4.0	3.5	38

*For price information see Section 2 Page 12

Optional: Stainless steel or chrome plated finish and with pipe thread or flanged connections.



Pipe Elbow with 125# ASA Flange

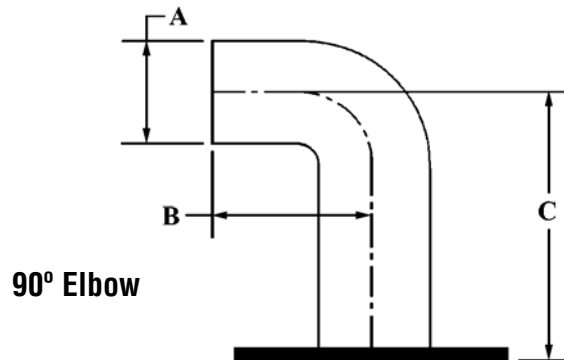
PART NUMBER	A DIAMETER	B	C
FLEL-2	2	2	2.5
FLEL-3	3	3	3.5
FLEL-3-8	3.5	4	4.0
FLEL-4	4	4	4.5
FLEL-5	5	5	5.5
FLEL-6	6	6	6.5
FLEL-8	8	8	8.5
FLEL-10	10	10	10.5
FLEL-12	12	12	12.5

*For price information see Section 2 Page 13

**Pipe Elbow 45° & 90°
 Short Radius Plain Ends**

PART NUMBER	SIZE DIAMETER
ELS-2	2
ELS-3	3
ELS-3-5	3.5
ELS-4	4
ELS-5	5
ELS-6	6
ELS-8	8
ELS-10	10
ELS-12	12

*For price information see Section 2 Page 14

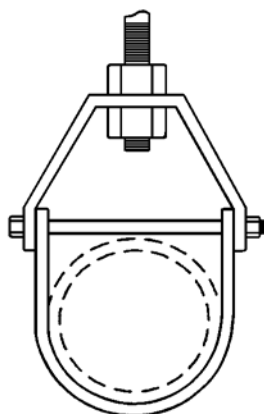


HAPCO
Pipe Hanger Brackets

PART SIZE	PART NUMBER	HANGER ROD SIZE	MAX LOAD	WT (Lbs.)
2-1/2	G260-2-8	3/8	1130	0.85
3	G260-3	1/2	1130	0.95
4	G260-4	5/8	1430	1.35
5	G260-5	5/8	1430	1.82
6	G260-6	3/4	1940	2.74
8	G260-8	3/4	2000	4.15
10	G260-10	7/8	3600	7.25
12	G260-12	7/8	3800	10.8
14	G260-14	1	4200	12.4
16	G260-16	1	4600	19.85
18	G260-18	1	4800	22.25
20	G260-20	1-1/4	4800	40.33
24	G260-24	1-1/4	4800	49.83
30	G260-30	1-1/4	6000	70.18

**For price information see Section 2 Page 13*

**Note: Estimated weight only*



Features:

- **Approvals:** Complies with Federal Specification WW-H-171
- **Installation:** Hanger load nut above clevis must be tightened securely to assure proper hanger performance, when a oversized clevis is used, a nipple should be placed over the clevis bolt as a spacer to assure the lower U-Strap will not move in on the bolt
- Design has yoke on outside of lower U-Strap so yoke cannot slide toward center of bolt, thus bending of bolt is minimized

Threaded Rod

PART SIZE	NUMBER
3/8"	63-375
1/2"	63-500
5/8"	63-625
3/4"	63-750
7/8"	63-875
1"	63-100
1-1/4"	63-1250

**For price information see Section 2 Page 12*

Tube Elbows

Rev. 03/11

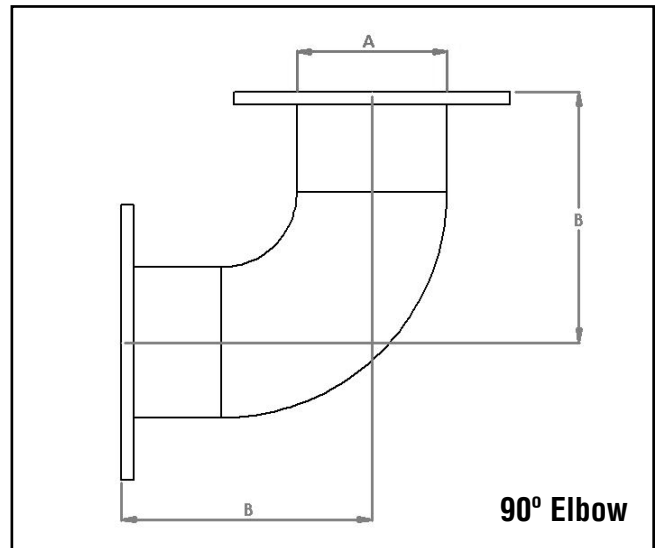
HAPCO

Tube Elbow with 125# ASA Flange

Tube Elbow with 125# ASA Flange on Both Ends

PART NUMBER	A DIA.	B	Estimated Weights (lbs)
TFFLEL-2	2	4	7
TFFLEL-3	3	5	10
TFFLEL-3-8	3.5	5.5	12
TFFLEL-4	4	6	17
TFFLEL-5	5.5	6	20
TFFLEL-6	6	10	26
TFFLEL-8	9.5	9.875	35
TFFLEL-10	10	10	45
TFFLEL-12	12	12	65

**For price information see Section 2 Page 15*



Tube Elbow with 125# ASA Flange

PART NUMBER	A DIA.	B	Estimated Weight (lbs)
TFLEL-2	2	4	5
TFLEL-3	3	5	7
TFLEL-3-8	3.5	5.5	8
TFLEL-4	4	6	11
TFLEL-5	5.5	6	13
TFLEL-6	6	10	18
TFLEL-8	9.5	9.875	23
TFLEL-10	10	10	30
TFLEL-12	12	12	42

**For price information see Section 2 Page 15*

