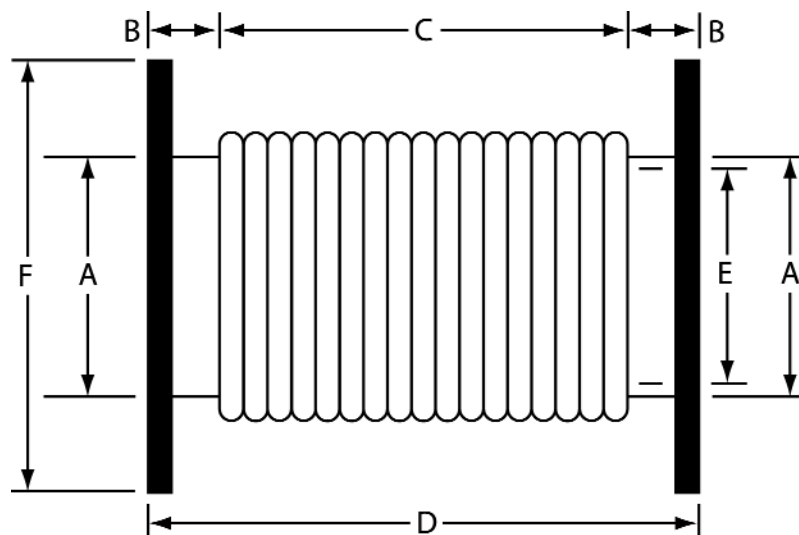


HAPCO
Flex Connectors
Flanged X Flanged

PART NUMBER	DWG #	SIZE	A PIPE SIZE (O.D.)	B	C	D	E (I.D.)	F
HSPF	3600A-1	1.5	1.5	1.5	15	18	1.375	5
HSPF	3601A-1	2	2	1.5	15	18	1.875	6
HSPF	3602A-1	2.5	2.5	1.5	15	18	2.375	7
HSPF	3603A-1	3	3.5	1.5	15	18	3	7.5
HSPF	3604A-1	3.5	4	1.5	15	18	3.5	8.5
HSPF	3605A-1	4	4.5	1.5	15	18	4	9
HSPF	3606A-1	5	5.563	1.5	15	18	5	10
HSPF	3607A-1	6	6.625	1.5	15	18	6	11
HSPF	3608A-1	8	8.625	1.5	15	18	8	13.5
HSPF	3609A-1	10	10.75	1.5	15	18	10	16
HSPF	3610A-1	12	12.75	1.5	15	18	12	19
HSPF	3611A-1	14	14	1.5	15	18	13.25	21
HSPF	3612A-1	16	16	1.75	14.5	18	15.25	23.5
HSPF	3613A-1	18	18	1.75	14.5	18	17.25	25
HSPF	3614A-1	20	20	1.75	14.5	18	19.25	27.5
HSPF	3615A-1	22	22	2.5	13	18	21.25	29.5
HSPF	3616A-1	24	24	2.5	13	18	23.25	32
HSPF	3617A-1	26	26	2.5	13	18	25.25	34.25
HSPF	3618A-1	28	28	2.5	13	18	27.25	36.5

**For price information see Section 2 Page 10*



Features:

- For each additional inch multiply list X 3%
- Single-ply T 321 stainless steel flex
- Stubs and flanges are carbon steel
- Optional features available:
 - Floating flanges
 - Stainless steel liners

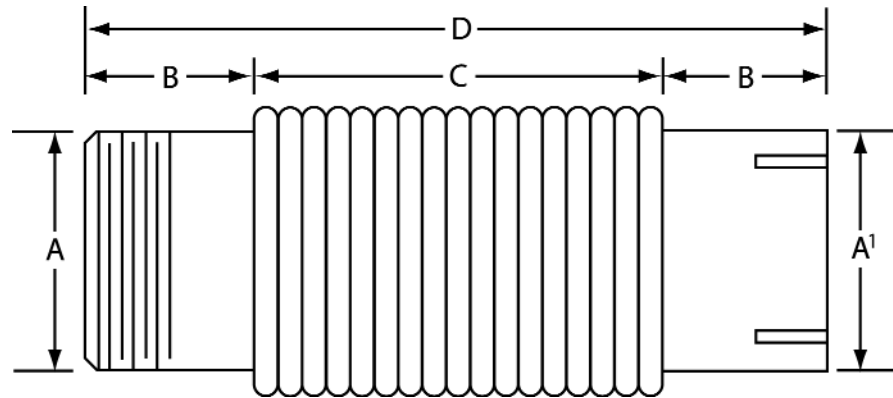
Accessories:

- Gaskets
- Fasteners
- High Temp Blankets
- Nuts & Bolts

HAPCO
Exhaust Connector
Male Pipe Thread x Slip Fit

PART NUMBER	DWG #	SIZE	A	A1	B	C	D
HSMPTXSF	3700A-1	1.5	1.50 MPT	1.50 ID	3	12	18
HSMPTXSF	3701A-1	2.0	2.00 MPT	2.00 ID	3	12	18
HSMPTXSF	3702A-1	2.5	2.50 MPT	2.50 ID	3	12	18
HSMPTXSF	3703A-1	3.0	3.00 MPT	3.00 ID	3	12	18
HSMPTXSF	3704A-1	3.5	3.50 MPT	3.50 ID	3	12	18
HSMPTXSF	3705A-1	4.0	4.00 MPT	4.00 ID	3	12	18
HSMPTXSF	3706A-1	5.0	5.00 MPT	5.00 ID	3	12	18
HSMPTXSF	3707A-1	6.0	6.00 MPT	6.00 ID	3	12	18

**For price information see Section 2 Page 10*



Features:

- For each additional inch multiply list X 3%
- Single-ply T 321 stainless steel flex
- Pipe fittings are steel
- Optional features available:
 - All stainless steel fittings and liners

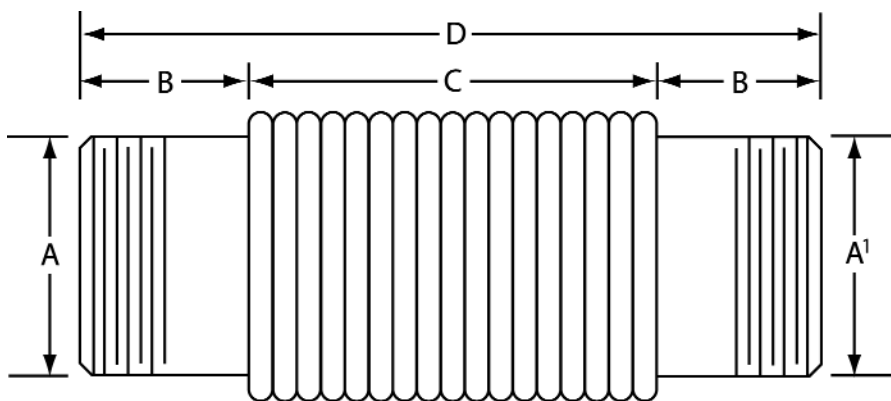
Accessories:

- U-Bolt Clamps
- High Temp Blankets

HAPCO
Exhaust Connector
Male Pipe Thread x Male Pipe Thread

PART NUMBER	DWG #	SIZE	A	A1	B	C	D
HSMPT	3800A-1	1.5	1.50 MPT	1.50 MPT	3	12	18
HSMPT	3801A-1	2.0	2.00 MPT	2.00 MPT	3	12	18
HSMPT	3802A-1	2.5	2.50 MPT	2.50 MPT	3	12	18
HSMPT	3803A-1	3.0	3.00 MPT	3.00 MPT	3	12	18
HSMPT	3804A-1	3.5	3.50 MPT	3.50 MPT	3	12	18
HSMPT	3805A-1	4.0	4.00 MPT	4.00 MPT </td <td>3</td> <td>12</td> <td>18</td>	3	12	18
HSMPT	3806A-1	5.0	5.00 MPT	5.00 MPT	3	12	18
HSMPT	3807A-1	6.0	6.00 MPT	6.00 MPT	3	12	18

**For price information see Section 2 Page 10*



Features:

- For each additional inch multiply list X 3%
- Single-ply T 321 stainless steel flex
- Pipe fittings are steel
- Optional features available:
 - All stainless steel fittings and liners

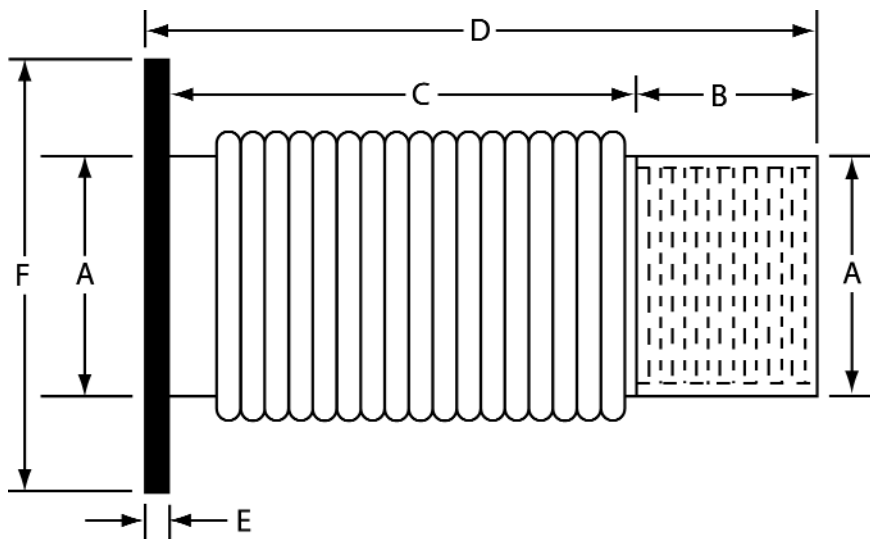
Accessories:

- High Temp Blankets

HAPCO
Exhaust Connector
Pipe Coupler x Flange (125#)

PART NUMBER	DWG #	SIZE	A	B	C	D	E	F
HSFPT-F	3900A-1	1.5	1.5	2.0	15.5	18	0.5	5
HSFPT-F	3901A-1	2.0	2.0	2.0	15.5	18	0.5	6
HSFPT-F	3902A-1	2.5	2.5	1.5	16	18	0.5	7
HSFPT-F	3903A-1	3.0	3.0	1.5	16	18	0.5	7.5
HSFPT-F	3904A-1	3.5	3.5	1.5	16	18	0.5	8.5
HSFPT-F	3905A-1	4.0	4.0	1.75	15.75	18	0.5	9
HSFPT-F	3906A-1	5.0	5.0	1.875	15.625	18	0.5	10
HSFPT-F	3907A-1	6.0	6.0	2.0	15.5	18	0.5	11

*For price information see Section 2 Page 10



Features:

- For each additional inch multiply list X 3%
- Single-ply T 321 stainless steel flex
- Pipe and flange are carbon steel
- Optional features available:
 - All stainless steel fittings and liner

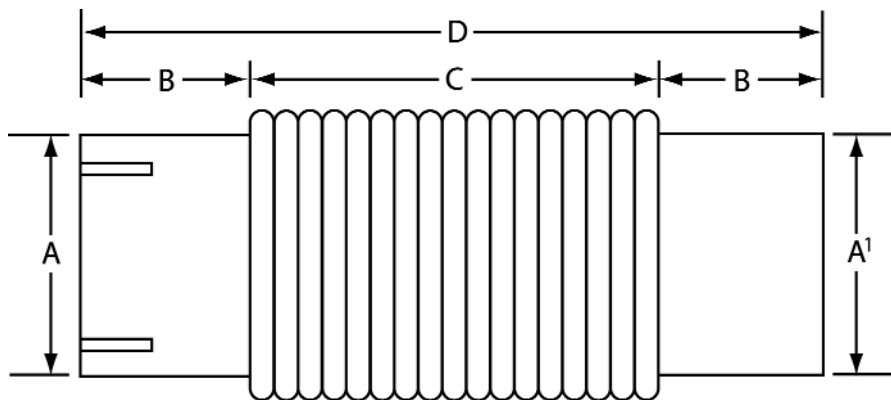
Accessories:

- High Temp Blankets

HAPCO
Exhaust Connector
Slip Fit x Tube (O.D.)

PART NUMBER	DWG #	SIZE	A (I.D.)	A1 (O.D.)	B	C	D
HSSF	4000A-1	1.5	1.5	1.5	3	12	18
HSSF	4001A-1	2.0	2.0	2.0	3	12	18
HSSF	4002A-1	2.5	2.5	2.5	3	12	18
HSSF	4003A-1	3.0	3.0	3.0	3	12	18
HSSF	4004A-1	3.5	3.5	3.5	3	12	18
HSSF	4005A-1	4.0	4.0	4.0	3	12	18
HSSF	4006A-1	5.0	5.0	5.0	3	12	18
HSSF	4007A-1	6.0	6.0	6.0	3	12	18
HSSF	4008A-1	8.0	8.0	8.0	3	12	18

*For price information see Section 2 Page 10



Features:

- For each additional inch multiply list X 3%
- Single-ply T 321 stainless steel flex
- Tube ends are carbon steel
- Price includes clamp for slip fit end
- Optional features available:
 - All stainless steel fittings and liners

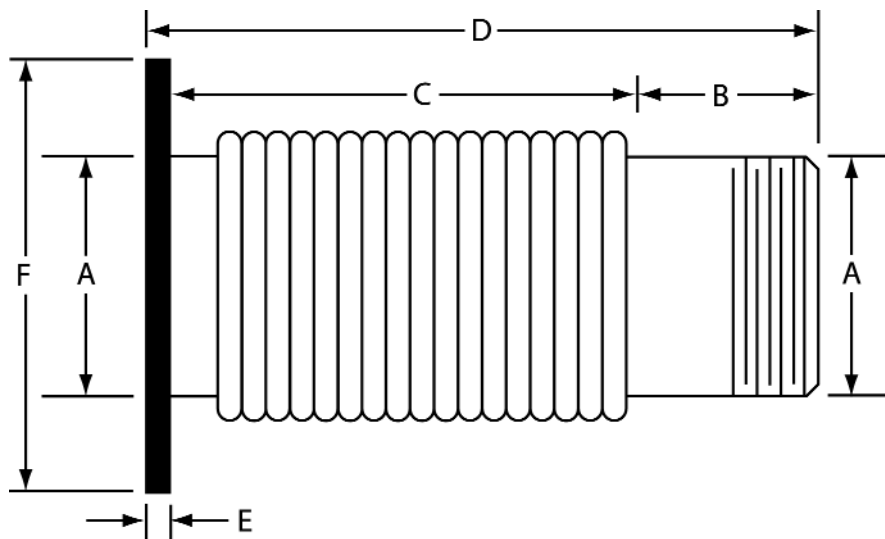
Accessories:

- U-Bolt Clamps
- High Temp Blankets

HAPCO
Exhaust Connector
Male Pipe Thread x Flange (125#)

PART NUMBER	DWG #	SIZE	A (I.D.)	B	C	D	E	F
HSNP-F	4100A-1	1.5	1.5 MPT	2.0	15.5	18	0.5	5.0
HSNP-F	4101A-1	2.0	2.0 MPT	2.5	15.0	18	0.5	6.0
HSNP-F	4102A-1	2.5	2.5 MPT	2.5	15.0	18	0.5	7.0
HSNP-F	4103A-1	3.0	3.0 MPT	3.0	14.5	18	0.5	7.5
HSNP-F	4104A-1	3.5	3.5 MPT	3.0	14.5	18	0.5	8.5
HSNP-F	4105A-1	4.0	4.0 MPT	3.5	14.0	18	0.5	9.0
HSNP-F	4106A-1	5.0	5.0 MPT	4.0	13.5	18	0.5	10.0
HSNP-F	4107A-1	6.0	6.0 MPT	4.0	13.5	18	0.5	11.0

**For price information see Section 2 Page 10*



Features:

- For each additional inch multiply list X 3%
- T321 stainless steel flex
- Pipe and flange connections are carbon steel
- Optional features available:
 - All stainless steel fittings and liner

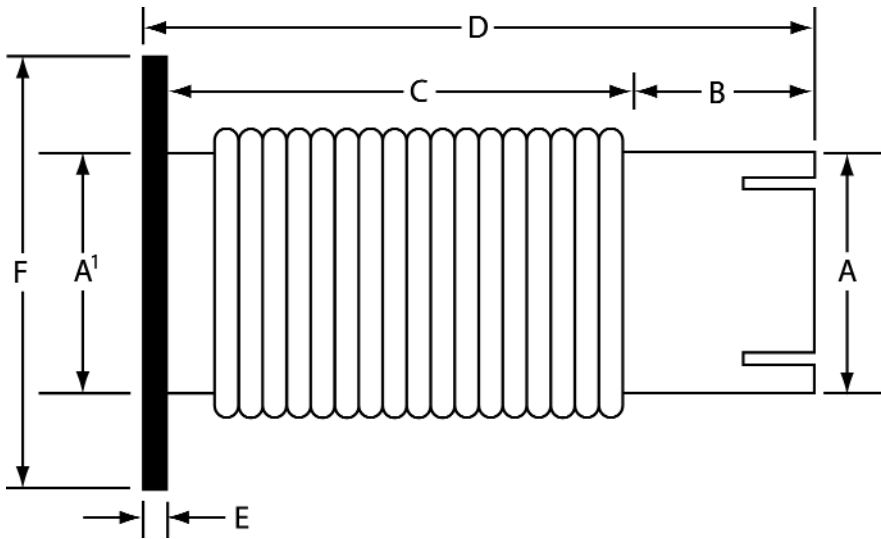
Accessories:

- Gaskets
- Fasteners
- High Temp Blankets

HAPCO
Exhaust Connector
Flanged x Slip Fit

PART NUMBER	DWG #	SIZE	A	A1	B	C	D	E	F
HSFXF	4200A-1	1.5	1.5 ID	1.5	3	14.5	18	0.5	5.0
HSFXF	4201A-1	2.0	2.0 ID	2.0	3	14.5	18	0.5	6.0
HSFXF	4202A-1	2.5	2.5 ID	2.5	3	14.5	18	0.5	7.0
HSFXF	4203A-1	3.0	3.0 ID	3.0	3	14.5	18	0.5	7.5
HSFXF	4204A-1	3.5	3.5 ID	3.5	3	14.5	18	0.5	8.5
HSFXF	4205A-1	4.0	4.0 ID	4.0	3	14.5	18	0.5	9.0
HSFXF	4206A-1	5.0	5.0 ID	5.0	3	14.5	18	0.5	10.0
HSFXF	4207A-1	6.0	6.0 ID	6.0	3	14.5	18	0.5	11.0
HSFXF	4208A-1	8.0	8.0 ID	8.0	3	14.5	18	0.5	13.5

**For price information see Section 2 Page 10*



Features:

- For each additional inch multiply list X 3%
- Single-ply 321 stainless steel flex
- Fittings are carbon steel
- Optional features available:
 - All stainless steel fittings and liner

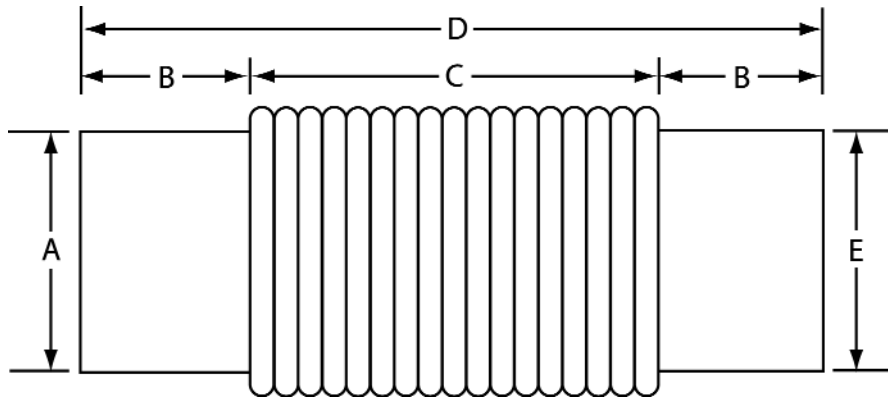
Accessories:

- Gaskets
- Fasteners
- U-Bolt Clamps
- High Temp Blankets

HAPCO
Exhaust Connector
Multi-Ply

PART NUMBER	DWG #	SIZE	A	B	C	D	E
HPS3	4300A-1	3	3.5	1.25	9	12	3
HPS3-8	4301A-1	3.5	4	1.25	9	12	3.5
HPS4	4302A-1	4	4.5	1.25	9	12	4
HPS5	4303A-1	5	5.625	1.25	9	12	5
HPS6	4304A-1	6	6.625	1.25	9	12	6
HPS8	4305A-1	8	8.625	1.25	9	12	8
HPS10	4306A-1	10	10.75	1.25	9	12	10
HPS12	4307A-1	12	12.75	1.25	9	12	12.5
HPS14	4308A-1	14	14	1.25	9	12	13.5
HPS16	4309A-1	16	16	1.25	9	12	15.5
HPS18	4310A-1	18	18	1.25	9	12	17.25
HPS20	4311A-1	20	20	1.25	9	12	19.25
HPS22	4312A-1	22	22	1.25	9	12	21.25
HPS24	4313A-1	24	24	1.25	9	12	23.25
HPS26	4314A-1	26	26	1.25	9	12	25.25
HPS28	4315A-1	28	28	1.25	9	12	27.25

*For price information see Section 2 Page 10



Features:

- For lengths different than above, call the factory for a quote
- Multi-ply (2) T321 stainless steel ends are carbon steel
- All weldments are free from contact with convolutions
- Optional features available:
 - All stainless steel ends and liners

Accessories:

- High Temp Blankets